

PART OF BLK 4, PLAT A, HOOPER CITY SURVEY &  
PART OF THE N. 1/2 OF SEC. 24, T.5N., R.3W., S.L.B. & M.

T. ARCH JONES SUB

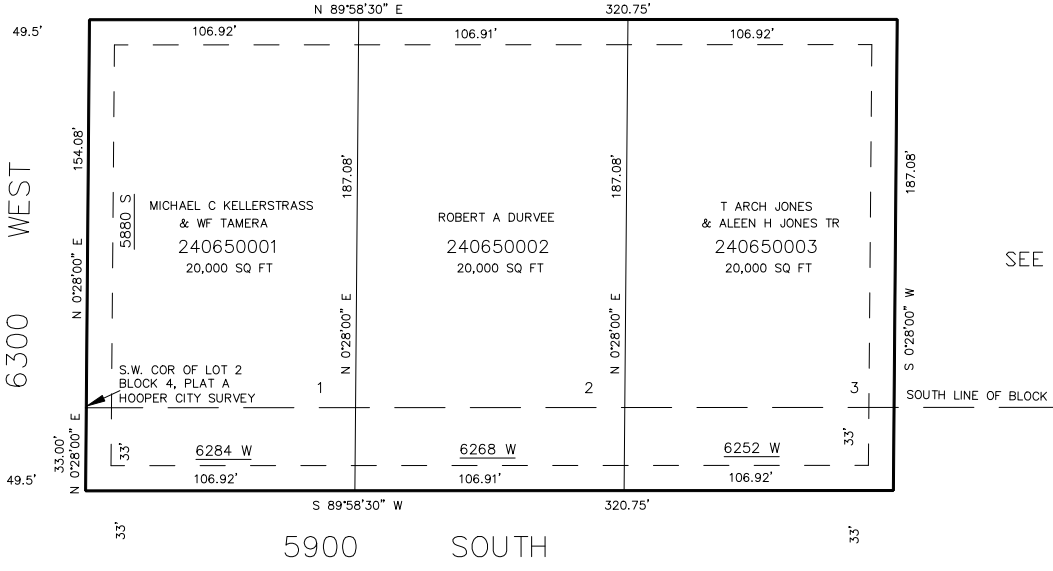
IN WEBER COUNTY  
SCALE 1" = 40'

TAXING UNIT: 31

SEE PAGE 3

SEE PAGE 3

SEE PAGE 3



SEE PAGE 3

10' UTILITY & DRAINAGE EASEMENTS EACH  
SIDE OF PROPERTY LINES AS INDICATED  
BY DASHED LINES EXCEPT AS OTHERWISE  
SHOWN.

FOR COMPLETE ENG DATA SEE  
ORIGINAL DEDICATION PLAT IN  
BOOK 36, PAGE 68 OF RECORDS.